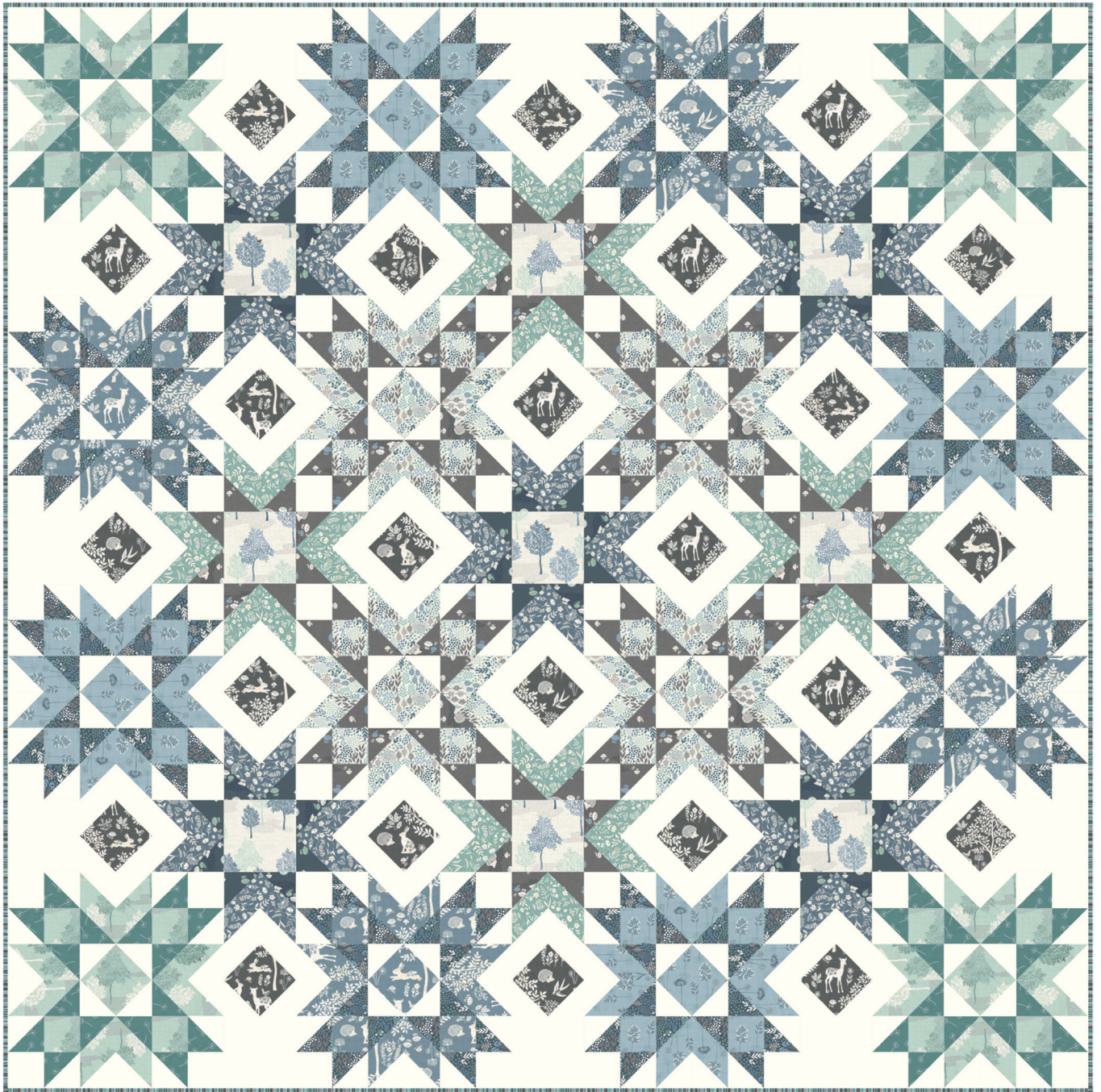


# Woodland

Finished size 60" x 60" (1.5m x 1.5m)

Designed by Lynne Goldsworthy of [lilysquilts.blogspot.com](http://lilysquilts.blogspot.com)  
using the Woodland collection from Makower UK [www.makoweruk.com](http://www.makoweruk.com)



**makower uk**

Unit 14, Cordwallis Business Park, Clivemont Road,  
Maidenhead, Berkshire SL6 7BU +44(0)1628 509640  
[sales@makoweruk.com](mailto:sales@makoweruk.com) [www.makoweruk.com](http://www.makoweruk.com)

 **andover**

# Woodland

Finished size 60" x 60" (1.5m x 1.5m)

Designed by Lynne Goldsworthy of [lilysquirts.blogspot.com](http://lilysquirts.blogspot.com)  
using the Woodland collection from Makower UK [www.makoweruk.com](http://www.makoweruk.com)

## Fabric Requirements

SKU	Description	Amount	Cut
1473 Q1	Linen Texture (background "BKG" fabric)	2 ¼ m 2 ½ yds	Seven 6 ¼" WOF strips cut into six 6 ¼" squares and one 4 ½" square per strip. One 4 ½" WOF strip cut into five 4 ½" squares. Fourteen 2 ½" WOF strips cut into two hundred and twenty-four 2 ½" squares.
1899 S2	Wavy Stripe	½ m ½ yd	Six 2 ½" WOF strips for binding
2059 B	Forest	½ m / ½ yd	Cut one 2 ½" and two 6 ¼" WOF strips. Cut sixteen 2 ½" squares from the 2 ½" WOF strip and eight 6 ¼" squares from the 6 ¼" WOF strips. Fussy cut four 4 ½" squares from the remainder of the fabric. See step 1 at cutting instructions for more information.
2059 S	Forest	¾ m / ¾ yd	Fussy cut twenty-four 4 ½" squares. See step 1 at cutting instructions for more information.
2059 S	Forest (for backing)	3 ½ m 3 ¾ yds	Two equal lengths
2060 B	Grasses	½ m / ½ yd	Cut one 2 ½" and two 6 ¼" WOF strips. Cut sixteen 2 ½" squares from the 2 ½" WOF strip. Cut eight 6 ¼" and four 4 ½" squares from the 6 ¼" WOF strips.
2061 B	Scatter	40cm/ 15"	Cut two 6 ¼" WOF strips and cut into ten 6 ¼" squares
2061 T	Scatter	40cm/ 15"	Cut two 6 ¼" WOF strips and cut into eight 6 ¼" squares
2062 B	Trees	One FQ	Nine 4 ½" squares
2062 T	Trees	½ m / ½ yd	Cut one 2 ½" and two 6 ¼" WOF strips. Cut sixteen 2 ½" squares from the 2 ½" WOF strip. Cut eight 6 ¼" and four 4 ½" squares from the 6 ¼" WOF strips.
2063 B	Leaves	60cm / 22"	Cut three 6 ¼" WOF strips and cut into sixteen 6 ¼" squares
2063 S	Leaves	½ m / ½ yd	Cut one 2 ½" and two 6 ¼" WOF strips. Cut sixteen 2 ½" squares from the 2 ½" WOF strip. Cut eight 6 ¼" and four 4 ½" squares from the 6 ¼" WOF strips.
2064 T	Seed Head	40cm/ 15"	Cut two 6 ¼" WOF strips and cut into eight 6 ¼" squares
2065 B	Hedgehogs	FQ	Five 6 ¼" squares
2065 S	Hedgehogs	40cm/ 15"	Cut two 6 ¼" WOF strips and cut into twelve 6 ¼" squares
Wadding		1.7m square 68" square	279 Cotton Mix 80-20 from <a href="http://www.vlieseline.com/en">http://www.vlieseline.com/en</a>
Threads			Aurifil 50wt for piecing and 40wt for quilting from <a href="http://www.aurifil.com">http://www.aurifil.com</a>
Templates			Sixty-six HST templates



## Notes:

- Read the pattern in full before starting.
- ¼" seams are used throughout except where stated otherwise.
- Press after each seam, pressing seams open or to one side as preferred.
- WOF - width of fabric - a strip of fabric cut from selvedge to selvedge.
- Make sure to visit <http://www.makoweruk.com/projects/> to ensure you are working from the most up-to-date version of the pattern.

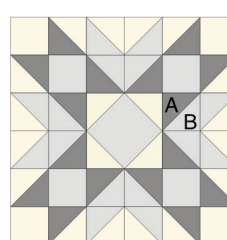
## Making the quilt top

1. Cut the fabrics as shown in the fabric requirements table. Fussy cut the 4 ½" squares of black and blue forest fabric so that design motifs (eg a deer or a hedgehog) will appear in the "window" of the economy block (fig 1).

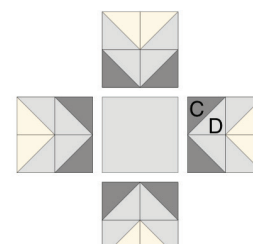


Fig 1

2. For this quilt you will make sixteen large star blocks, nine small star blocks and twenty-four black forest economy blocks (fig 2). **NB: the small star blocks will not be assembled until the quilt top is assembled.**



Large star block



Small star block



Economy Block

3. You will make four of each colourway of the large star blocks (see fig 3). For each block, you will make:
  - one set of A/BKG HSTs
  - one set of A/B HSTs
  - one set of B/BKG HSTs
4. You will make five blue and four green small star blocks (fig 4). For each block you will make one set of:
  - one set of C/D HSTs
  - one set of D/BKG HSTs

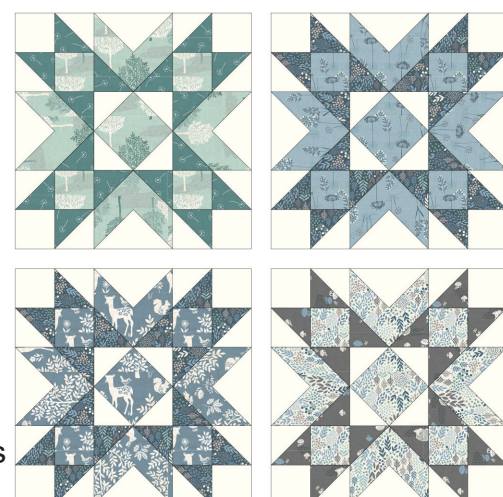


Fig 3

5. To make each set of eight half square triangle units (HSTs) you will use one HST template and two (different) 6 ¼" fabric squares. The fabric squares are ½" bigger than the templates so that they overhang the paper by ¼" all around the dashed line – this is to make it easier to line up the fabrics to the paper template. Each HST template makes eight HST units.

6. For example, for one of the sets of A/BKG HST units, pin one A and one BKG 6 ¼" square to the back of one of the HST templates with the fabrics right sides together and the lighter fabric next to the paper.

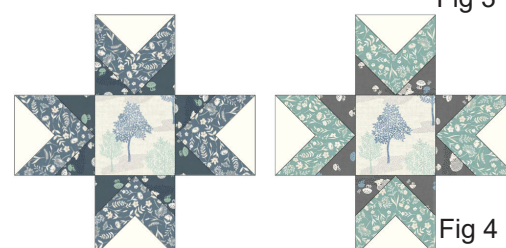


Fig 4

7. Shorten your machine stitch to 1.5 and sew along all of the red lines.
8. Cut the template and fabric along all the blue lines using a rotary cutter.
9. Trim off the corners on each triangle along the green lines.
10. Press each HST unit open.
11. Remove paper from the back of each HST unit.
12. Repeat for the remaining sets of HST units.
13. You will make twenty-four black forest economy squares and also the sixteen economy squares for the centre of each large star blocks.

14. To make each economy square you will add four BKG fabric corner square triangles to each corner of the print fabric  $4\frac{1}{2}$ " squares as set out below.
15. For each print  $4\frac{1}{2}$ " square, you will need four BKG  $2\frac{1}{2}$ " squares. Mark diagonal lines on the back of each of the BKG fabric squares with an erasable marker.
16. Place one of the small squares right sides together with one of the large squares and sew along the diagonal line. Repeat with a square on the opposite corner (fig 5).
17. Trim away excess fabric  $\frac{1}{4}$ " beyond the seam allowance lines (fig 6).

18. Press over to add two triangles to the corners (fig 7).

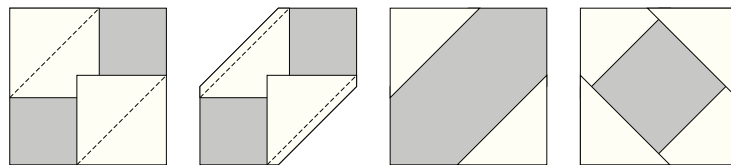


Fig 5-8

19. Repeat for the other two corners (fig 8).

20. You now have all the pieces to assemble the large and small star blocks.

21. To assemble each large star block, you will need the HSTs, the economy square, four print  $2\frac{1}{2}$ " squares and four  $2\frac{1}{2}$ " BKG fabric squares.

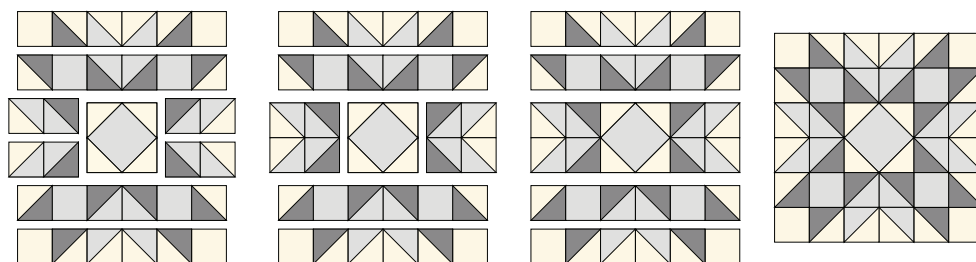


Fig 9-12

22. Sew the HSTs and  $2\frac{1}{2}$ " squares into rows as shown in fig 9.

23. Sew the pairs of shorter rows together (fig 10) and sew to each side of the economy squares (fig 11).

24. Sew all the rows together to finish the block (fig 12).

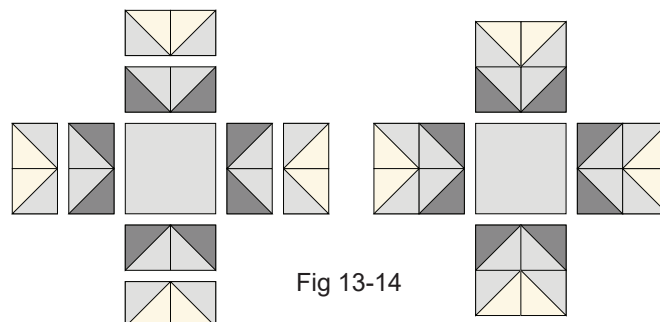


Fig 13-14

25. At this stage you will only assemble the four mini blocks surrounding each small star rather than assembling the whole star as you did for the large stars.

26. For each small star you will need the HSTs for that star.

27. Sew the HSTs for each mini block into eight pairs (fig 13) then sew those pairs together to make four mini blocks per small star (fig 14).

28. To make the joining sections, you will need the small star mini blocks, the black forest economy squares and the  $4\frac{1}{2}$ " BKG fabric squares. You will make twelve blocks as shown in figs 15 and 16 and twelve as shown in figs 17 and 18.

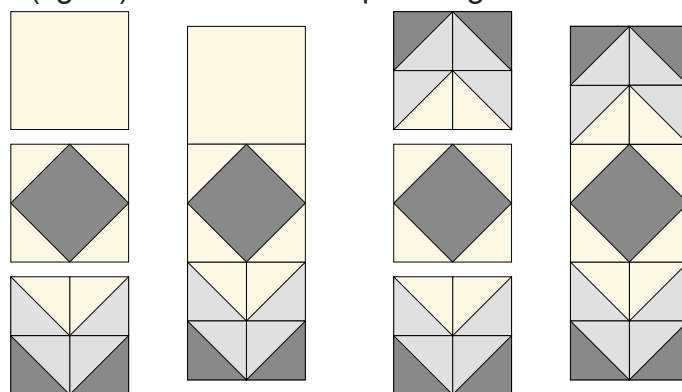


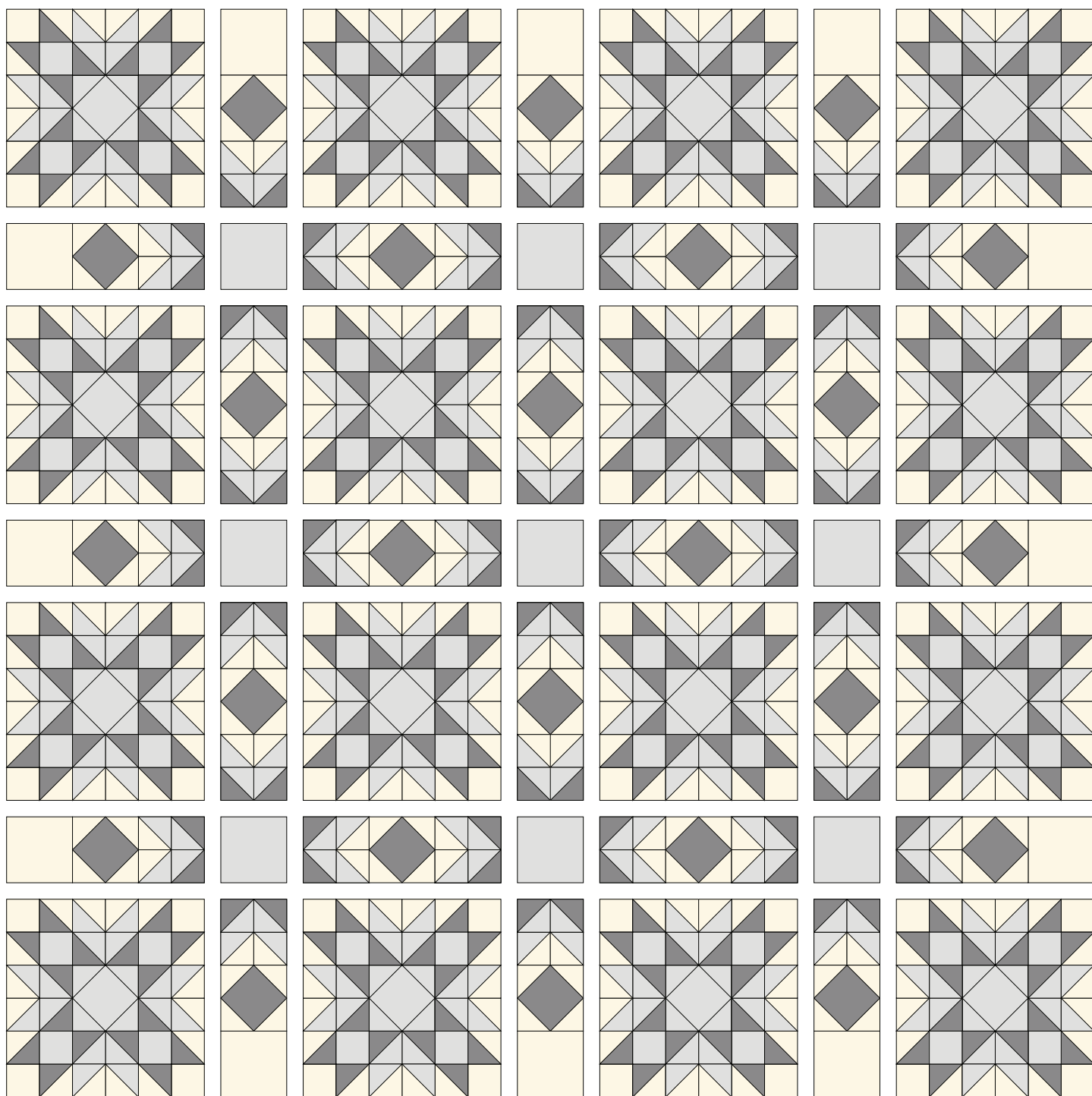
Fig 15-18

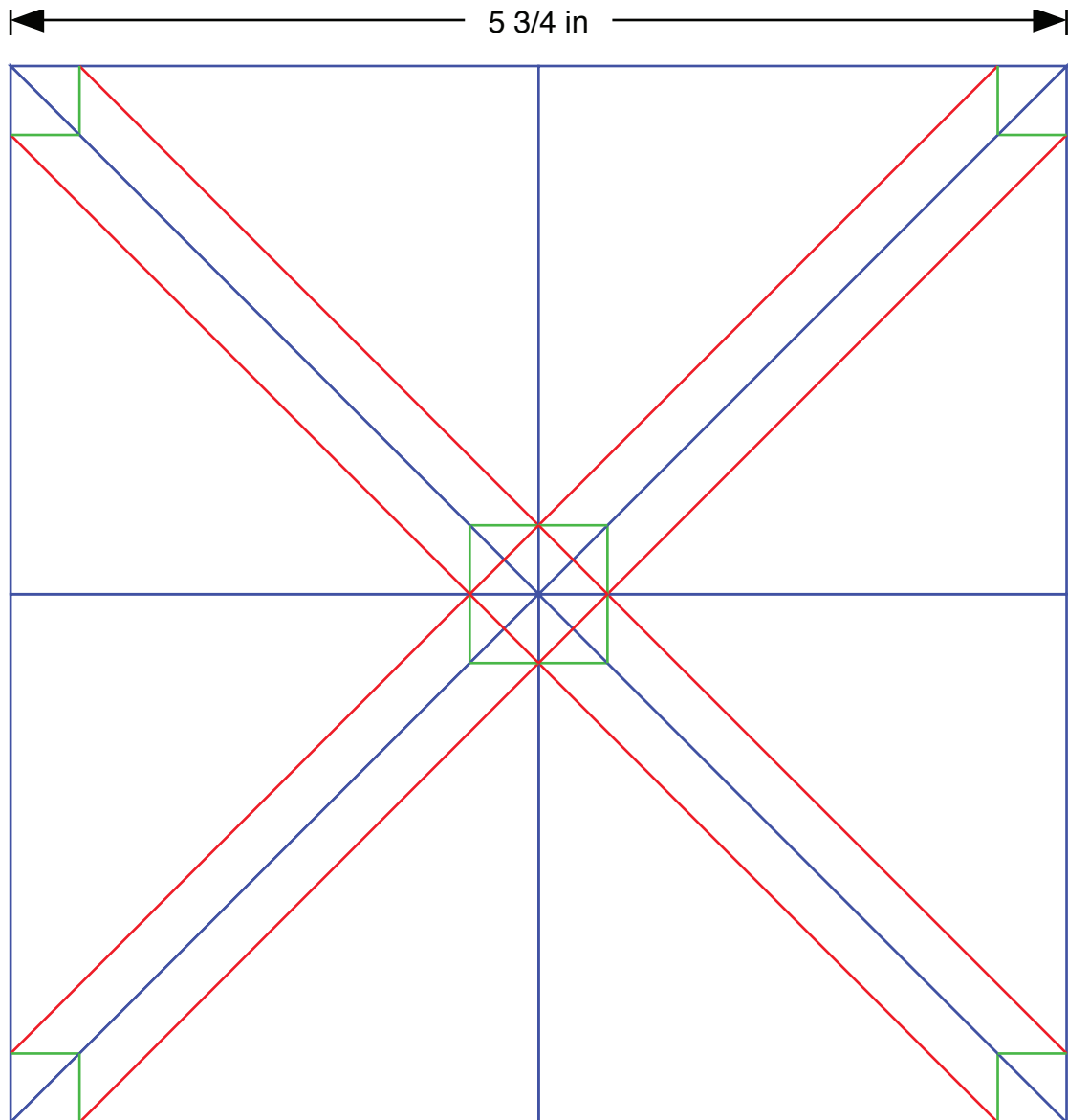
**NB: as you make these joining pieces, take care to make sure that the economy block is correctly orientated for each piece. For example, although you will make eight joining pieces using one  $4\frac{1}{2}$ " BKG fabric square, one economy square and one blue mini block, they will be orientated in four different ways depending on whether they will be used in the left side, the right side, the top or the bottom of the quilt.**

29. To assemble the quilt top, sew the large star blocks, the joining sections and the  $4\frac{1}{2}$ " squares of blue trees (2062/B) into the nine rows as shown in fig 19. Sew those row together to make the quilt top.

## Finishing the quilt

1. Sew the binding strips end to end using diagonal or straight seams as preferred and press wrong sides together along the length to make a double fold binding.
2. Make a quilt sandwich, basting together the quilt back, the wadding and the quilt top.
3. Quilt as desired then trim the quilt square, removing excess wadding and backing. We quilted a diagonal cross hatch of lines approximately 1 ½" apart using a cream 40wt Aurifil thread on the front and back.
4. Bind the quilt taking care to mitre the corners.





Templates must be printed at 100% or “no scaling”. To ensure the templates are the correct size, measure the guide line to make sure it has printed at the correct length.





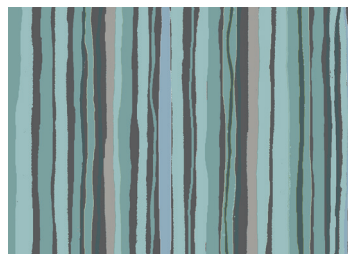
2059/S Forest



2059/B Forest



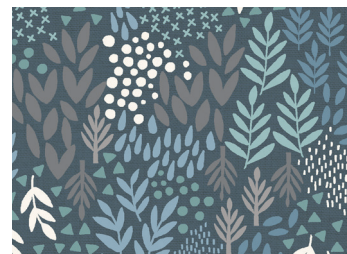
2063/S Leaves



1899/S2 Wavy Stripe



1899/B2 Wavy Stripe



2063/B Leaves



2064/B Seedheads



2065/B Hedgehogs



2065/S Hedgehogs



2064/T Seedheads



2062/T Trees



2061/B Scatter



2061/T Scatter



2062/B Trees



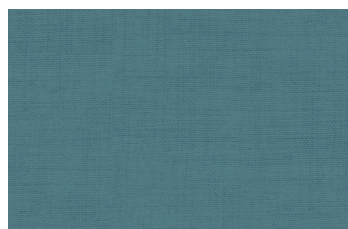
2060/B Grasses



2060/S Grasses



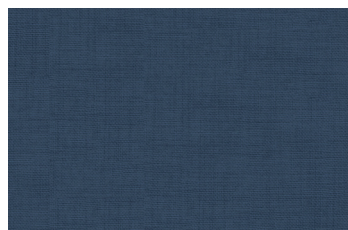
1473/S2 Linen Texture



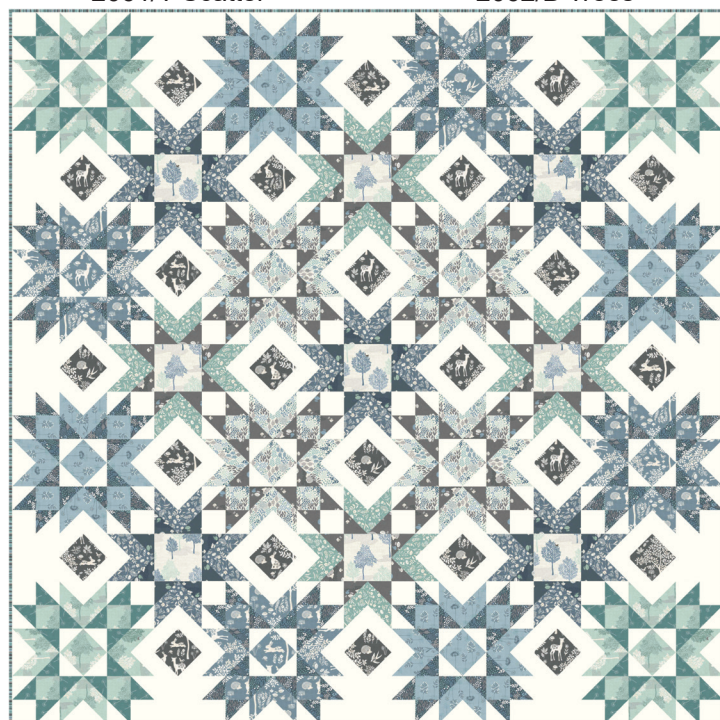
1473/T6 Linen Texture



1473/S8 Linen Texture



1473/B8 Linen Texture



Woodland Quilt Finished size 60" x 60" (1.5m x 1.5m)

Designed by Lynne Goldsworthy of [lilysquilts.blogspot.com](http://lilysquilts.blogspot.com)

Download full instructions [www.makoweruk.com](http://www.makoweruk.com)